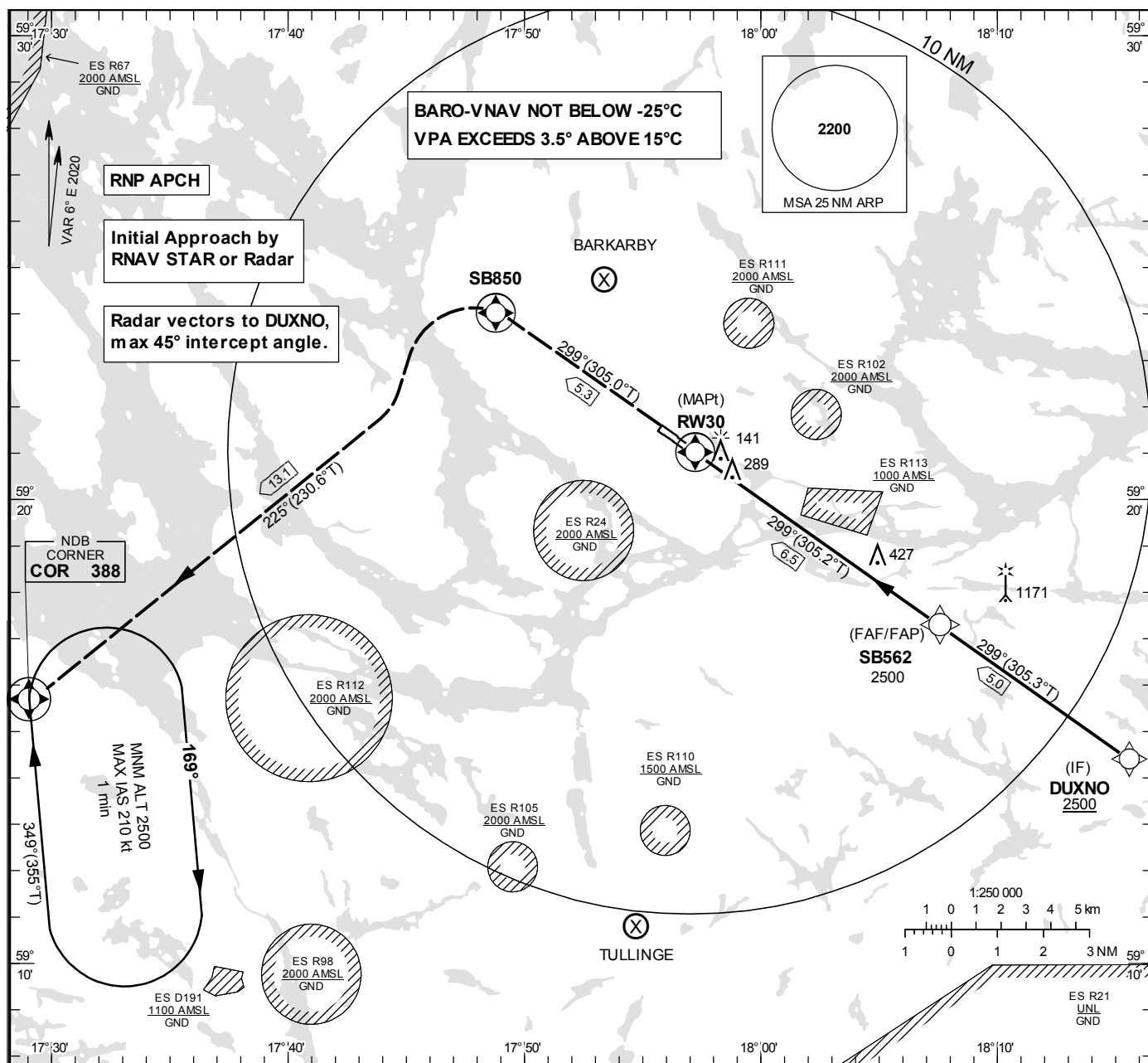


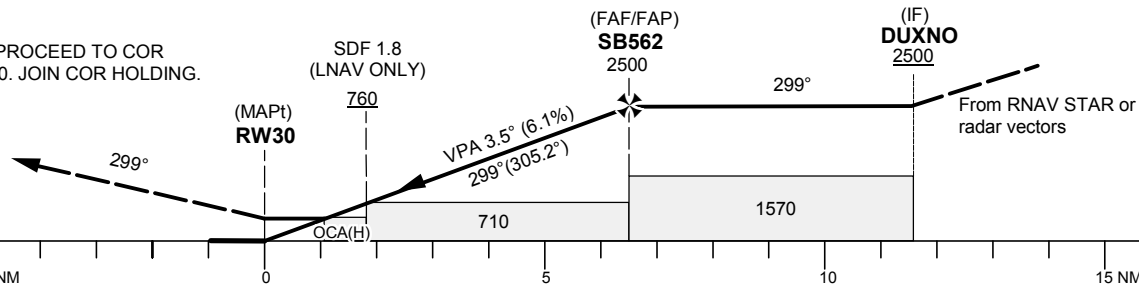
**INSTRUMENT  
APPROACH  
CHART – ICAO**

**THR ELEV 42.8 ft, AD ELEV 47 ft**  
OCH are related to THR.  
BRG are MAG (True).  
ALT, HGT and ELEV in ft.

BROMMA TOWER	118.105
STOCKHOLM APPROACH	120.155
BROMMA ATIS	122.455



CLIMB TO SB850  
TURN LEFT AND PROCEED TO COR  
CLIMBING TO 2500. JOIN COR HOLDING.



OCA (H)				Final Approach	Distance FAF-MAPt 6.5 NM					
Cat of ACFT	A	B	C	Dist to RW30	NM	2	3	4	5	6
LPV	218 (175)	226 (183)	237 (194)	ALT	ft	836	1208	1579	1951	2323
LNAV/VNAV	460 (417)	473 (430)	486 (443)	GS	kt	80	100	120	140	160
LNAV	570 (530)			Rate of descent	ft/min	495	620	745	865	990

CHANGE: Editorial

STOCKHOLM/Bromma

RNP RWY 30

Path Desc	Waypoint Identifier	Fly-over	Course °M(°T)	Dist (NM)	Turn Dir	Altitude	Speed	VPA/ RDH	Rec Navaid	Navigation Specification
IF	DUXNO	-	-	-	-	+2500	-	-	-	RNP APCH
TF	SB562	-	299°(305.3°)	5.0	-	@2500	-	-	-	RNP APCH
TF	RW30	Y	299°(305.2°)	6.5	-	@93	-	-3.50/50	-	RNP APCH
TF	SB850	Y	299°(305.0°)	5.3	-	-	-	-	-	RNP APCH
TF	COR	Y	225°(230.6°)	13.1	L	-	-	-	-	RNP APCH
HM	COR	-	349°(355.0°)	-	R	+2500	-210	-	-	RNAV 1

## FAS Data Block

## RNP RWY 30

## Input data

Operation Type	0
SBAS Provider	1 (EGNOS)
Airport Identifier	ESSB
Runway	30
Runway Letter	0 (None)
Approach Performance Designator	0
Route Indicator	
Reference Path Data Selector	0
Reference Path Identifier	E30A
LTP/FTP Latitude	592100.2800N
LTP/FTP Longitude	0175713.1700E
LTP/FTP Ellipsoidal Height (metres)	36.2
FPAP Latitude	592137.4615N
Delta FPAP Latitude (seconds)	37.1815
FPAP Longitude	0175529.2365E
Delta FPAP Longitude (seconds)	-103.9335
Threshold Crossing Height	50.0
TCH Units Selector	0 (feet)
Glidepath Angle (degrees)	3.50
Course Width (metres)	105.00
Length Offset (metres)	336
HAL (metres)	40.0
VAL (metres)	35.0

## Output data

Data Block	10 02 13 13 05 1E 00 00 01 30 33 05 F0 64 78 19 A4 72 B4 07 6A 15 7B 22 01 05 D4 FC F4 01 5E 01 64 2A C8 AF 80 A1 A2 4F
Calculated CRC Value	80A1A24F
Supplied CRC Value	80A1A24F
Comparison Result	OK